

H3156X

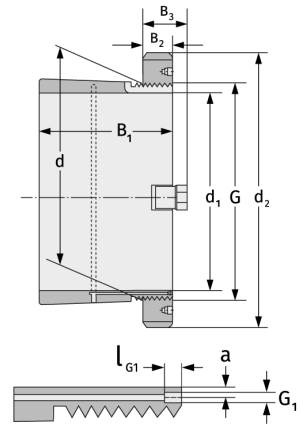
Spannhülsen



Details:

Hauptabmessungen

d [mm]	280	B ₂ [mm]	41
Gewicht [kg]	≈ 24,5	G [mm]	Tr280x4
d ₁ [mm]	260	G ₁ [mm]	M6
d ₂ [mm]	350	l _{G1} [mm]	7
B ₁ [mm]	195	a [mm]	4,2



Anschlussmaße

Enthaltene Komponenten

Nut-/Wellenmutter

HM56T

Sicherung

MB56