

H3176

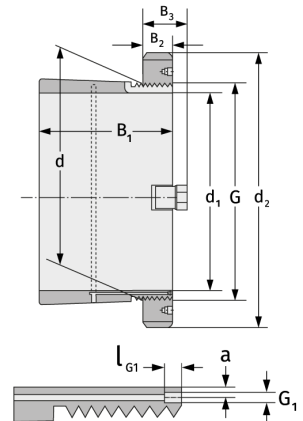
Spannhülsen



Details:

Hauptabmessungen

d [mm]	380	B ₃ [mm]	77
Gewicht [kg]	≈ 61,7	G [mm]	Tr380x5
d ₁ [mm]	360	G ₁ [mm]	M6
d ₂ [mm]	490	l _{G1} [mm]	7
B ₁ [mm]	264	a [mm]	3,5
B ₂ [mm]	60		



Anschlussmaße

Enthaltene Komponenten

Nut-/Wellenmutter	HM3176
Sicherung	MS3168