

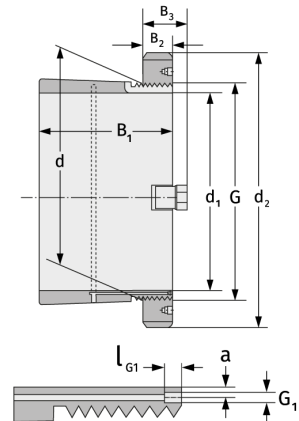
H32/1000

Spannhülsen



Details:

Hauptabmessungen			
d [mm]	1000	B ₃ [mm]	154
Gewicht [kg]	≈ 952	G [mm]	Tr1000 x8
d ₁ [mm]	950	G ₁ [mm]	G1/8
d ₂ [mm]	1240	l _{G1} [mm]	12
B ₁ [mm]	707	a [mm]	10
B ₂ [mm]	125		



Anschlussmaße	Enthaltene Komponenten	
	Nut-/Wellenmutter	HM31/100 0
Sicherung	MS31/100 0	