

H32/670

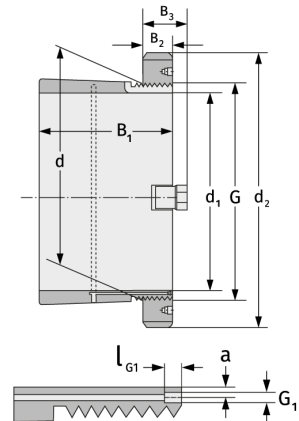
Spannhülsen



Details:

Hauptabmessungen

d [mm]	670	B ₃ [mm]	131
Gewicht [kg]	≈ 404	G [mm]	Tr670x6
d ₁ [mm]	630	G ₁ [mm]	G1/8
d ₂ [mm]	850	l _{G1} [mm]	12
B ₁ [mm]	558	a [mm]	8
B ₂ [mm]	106		



Anschlussmaße

Enthaltene Komponenten

Nut-/Wellenmutter	HM31/670
Sicherung	MS31/670