

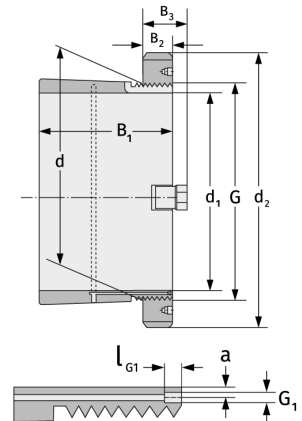
# H32/900

Spannhülsen



## Details:

Hauptabmessungen			
d [mm]	900	B <sub>3</sub> [mm]	154
Gewicht [kg]	≈ 776	G [mm]	Tr900x7
d <sub>1</sub> [mm]	850	G <sub>1</sub> [mm]	G1/8
d <sub>2</sub> [mm]	1120	l <sub>G1</sub> [mm]	12
B <sub>1</sub> [mm]	660	a [mm]	10
B <sub>2</sub> [mm]	125		



Anschlussmaße	Enthaltene Komponenten	
	Nut-/Wellenmutter	HM31/900
	Sicherung	MS31/900