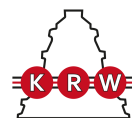


H3268

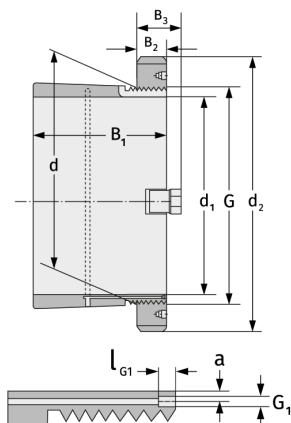
Spannhülsen



Details:

Hauptabmessungen

d [mm]	340	B ₃ [mm]	72
Gewicht [kg]	≈ 54,6	G [mm]	Tr340x 5
d ₁ [mm]	320	G ₁ [mm]	M6
d ₂ [mm]	440	l _{G1} [mm]	7
B ₁ [mm]	288	a [mm]	3,5
B ₂ [mm]	55		



Anschlussmaße

Enthaltene Komponenten

Nut-/Wellenmutter	HM3168
Sicherung	MS3168