

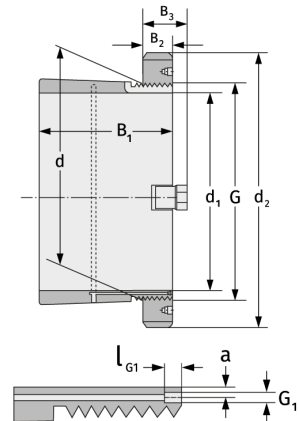
# H3272

Spannhülsen



## Details:

Hauptabmessungen			
d [mm]	360	B <sub>3</sub> [mm]	75
Gewicht [kg]	≈ 60,6	G [mm]	Tr360x5
d <sub>1</sub> [mm]	340	G <sub>1</sub> [mm]	M6
d <sub>2</sub> [mm]	460	l <sub>G1</sub> [mm]	7
B <sub>1</sub> [mm]	299	a [mm]	3,5
B <sub>2</sub> [mm]	58		



Anschlussmaße	Enthaltene Komponenten	
	Nut-/Wellenmutter	HM3172
	Sicherung	MS3168