

H3284

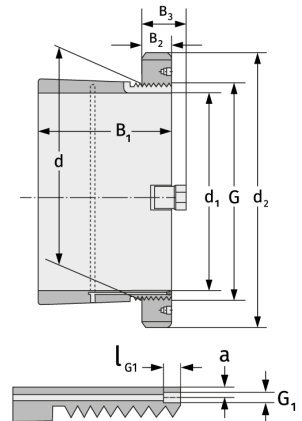
Spannhülsen



Details:

Hauptabmessungen

d [mm]	420	B ₃ [mm]	90
Gewicht [kg]	≈ 94	G [mm]	Tr420x5
d ₁ [mm]	400	G ₁ [mm]	M6
d ₂ [mm]	540	l _{G1} [mm]	7
B ₁ [mm]	352	a [mm]	3,5
B ₂ [mm]	70		



Anschlussmaße

Enthaltene Komponenten

Nut-/Wellenmutter	HM3184
Sicherung	MS3180