

H39/750

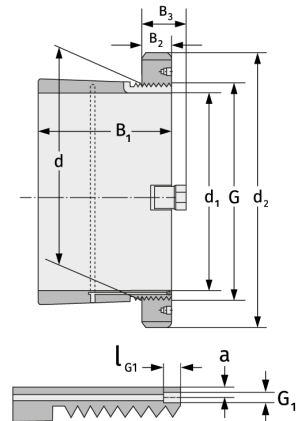
Spannhülsen



Details:

Hauptabmessungen

d [mm]	750	B ₃ [mm]	112
Gewicht [kg]	≈ 209	G [mm]	Tr750x7
d ₁ [mm]	710	G ₁ [mm]	G1/8
d ₂ [mm]	870	l _{G1} [mm]	12
B ₁ [mm]	291	a [mm]	8
B ₂ [mm]	90		



Anschlussmaße

Enthaltene Komponenten

Nut-/Wellenmutter	HM30/750
Sicherung	MS30/750