

H39/950

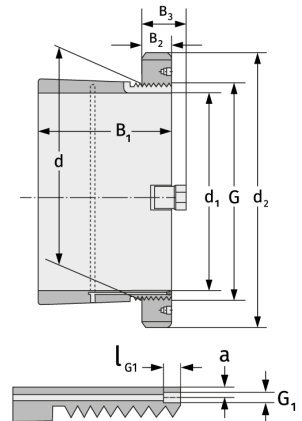
Spannhülsen



Details:

Hauptabmessungen

d [mm]	950	B ₃ [mm]	125
Gewicht [kg]	≈ 362	G [mm]	Tr950x8
d ₁ [mm]	900	G ₁ [mm]	G1/8
d ₂ [mm]	1080	l _{G1} [mm]	12
B ₁ [mm]	344	a [mm]	10
B ₂ [mm]	100		



Anschlussmaße

Enthaltene Komponenten

Nut-/Wellenmutter	HM30/950
Sicherung	MS30/950