

H3936

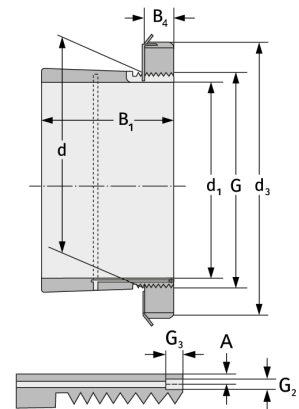
Spannhülsen



Details:

Hauptabmessungen

d [mm]	180	B ₂ [mm]	30
Gewicht [kg]	≈ 5,7	G [mm]	M180x3
d ₁ [mm]	160	G ₁ [mm]	M6
d ₂ [mm]	210	l _{G1} [mm]	7
B ₁ [mm]	87	a [mm]	4,2



Anschlussmaße

Enthaltene Komponenten

Nut-/Wellenmutter	KML36
Sicherung	MBL36