

H3972

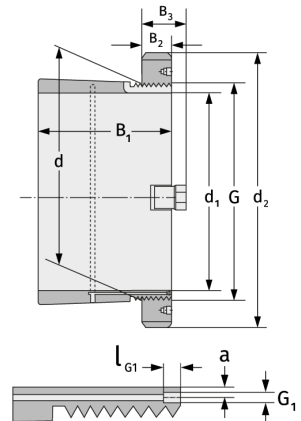
Spannhülsen



Details:

Hauptabmessungen

d [mm]	360	B ₃ [mm]	58
Gewicht [kg]	≈ 24,5	G [mm]	Tr360x5
d ₁ [mm]	340	G ₁ [mm]	M6
d ₂ [mm]	420	l _{G1} [mm]	7
B ₁ [mm]	144	a [mm]	3,5
B ₂ [mm]	45		



Anschlussmaße

Enthaltene Komponenten

Nut-/Wellenmutter	HM3072
Sicherung	MS3072