

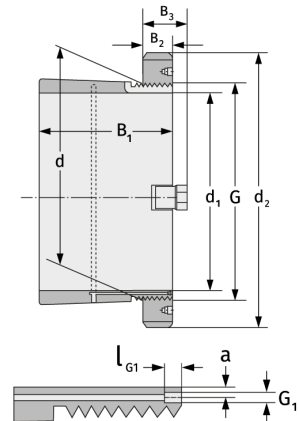
# H3992

Spannhülsen



## Details:

Hauptabmessungen			
d [mm]	460	B <sub>3</sub> [mm]	77
Gewicht [kg]	≈ 59,9	G [mm]	Tr460x5
d <sub>1</sub> [mm]	430	G <sub>1</sub> [mm]	M8
d <sub>2</sub> [mm]	540	l <sub>G1</sub> [mm]	12
B <sub>1</sub> [mm]	189	a [mm]	6,5
B <sub>2</sub> [mm]	60		



Anschlussmaße		Enthaltene Komponenten	
		Nut-/Wellenmutter	HM3092
		Sicherung	MS3088