

# KM32

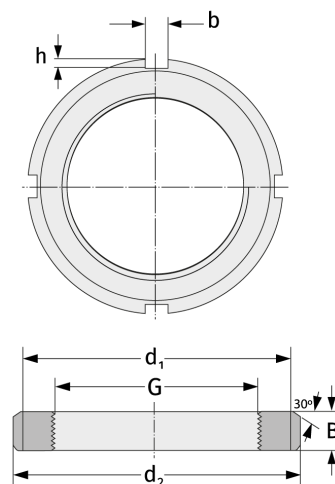
Nutmuttern



## Details:

### Hauptabmessungen

Gewicht [kg]	≈ 2,59	B [mm]	25
G [mm]	M160x3	b [mm]	16
d <sub>1</sub> [mm]	182	h [mm]	7
d <sub>2</sub> [mm]	210		



### Anschlussmaße

### Enthaltene Komponenten

Sicherung

MB32