

KM33

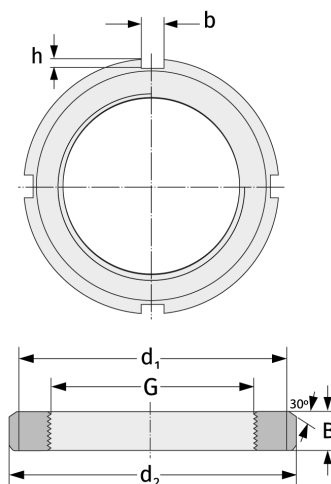
Nutmuttern



Details:

Hauptabmessungen

Gewicht [kg]	≈ 2,7	B [mm]	26
G [mm]	M165x3	b [mm]	16
d ₁ [mm]	193	h [mm]	7
d ₂ [mm]	210		



Anschlussmaße

Enthaltene Komponenten

Sicherung

MB33