

Q320MPB

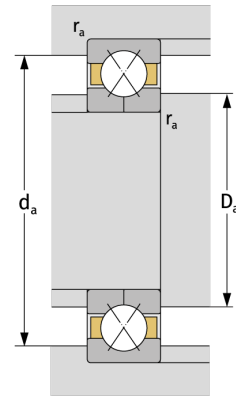
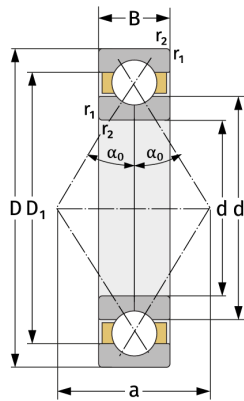
Vierpunktlager (metrisch)



Details:

Hauptabmessungen

d [mm]	100	D_1 [mm]	$\approx 175,3$
D [mm]	215	$r_{1,2}$ [mm]	3
B [mm]	47	α_0 [°]	23
Gewicht [kg]	$\approx 9,51$	a [mm]	≈ 67
d_1 [mm]	$\approx 139,7$		



Anschlussmaße		Berechnungsdaten	
$d_{a, \min}$ [mm]	114	C [kN]	363
$D_{a, \max}$ [mm]	201	C_0 [kN]	403
$r_{a, \max}$ [mm]	2,5	C_u [kN]	15,7
		n_{th} [min ⁻¹]	2925
		n_g [min ⁻¹]	5500