

QJ1924MPA

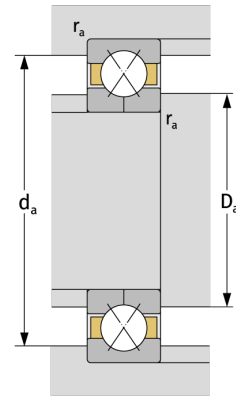
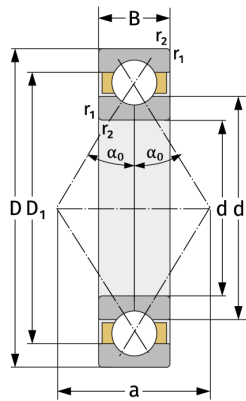
Vierpunktlager (metrisch)



Details:

Hauptabmessungen

d [mm]	120	D_1 [mm]	$\approx 149,5$
D [mm]	165	$r_{1,2}$ [mm]	1,1
B [mm]	22	α_0 [°]	35
Gewicht [kg]	$\approx 1,51$	a [mm]	≈ 100
d_1 [mm]	$\approx 135,5$		



Anschlussmaße		Berechnungsdaten	
$d_{a, \min}$ [mm]	126	C [kN]	105
$D_{a, \max}$ [mm]	159	C_0 [kN]	148
$r_{a, \max}$ [mm]	1	C_u [kN]	6,04
		n_{th} [min ⁻¹]	2965
		n_g [min ⁻¹]	6100