

QJ1944MPA

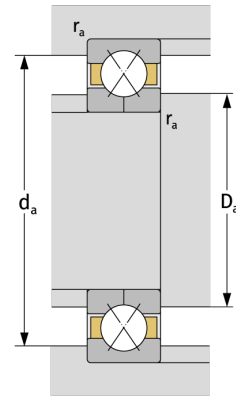
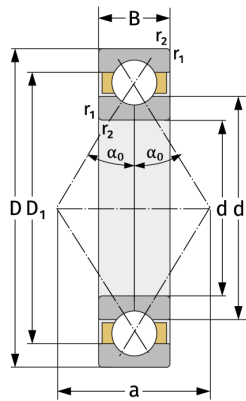
Vierpunktlager (metrisch)



Details:

Hauptabmessungen

d [mm]	220	D_1 [mm]	$\approx 272,4$
D [mm]	300	$r_{1,2}$ [mm]	2,1
B [mm]	38	α_0 [°]	35
Gewicht [kg]	$\approx 8,53$	a [mm]	≈ 182
d_1 [mm]	$\approx 247,6$		



Anschlussmaße		Berechnungsdaten	
$d_{a, \min}$ [mm]	230,2	C [kN]	299
$D_{a, \max}$ [mm]	289,8	C_0 [kN]	483
$r_{a, \max}$ [mm]	2,1	C_u [kN]	14,8
		n_{th} [min ⁻¹]	1760
		n_g [min ⁻¹]	3200