

# QJ1992MPA

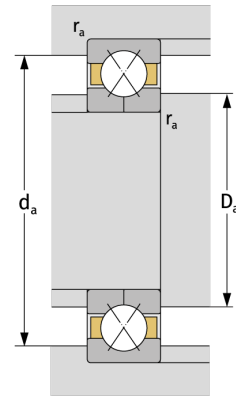
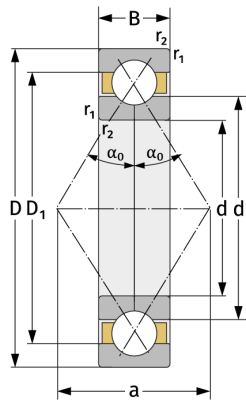
Vierpunktlager (metrisch)



## Details:

### Hauptabmessungen

d [mm]	460	$D_1$ [mm]	$\approx 564,8$
D [mm]	620	$r_{1,2}$ [mm]	4
B [mm]	74	$\alpha_0$ [°]	35
Gewicht [kg]	$\approx 69,4$	a [mm]	$\approx 378$
$d_1$ [mm]	$\approx 515,3$		



Anschlussmaße		Berechnungsdaten	
$d_{a, \min}$ [mm]	474,6	C [kN]	800
$D_{a, \max}$ [mm]	605,4	$C_0$ [kN]	2000
$r_{a, \max}$ [mm]	3	$C_u$ [kN]	43
		$n_{th}$ [min <sup>-1</sup> ]	679
		$n_g$ [min <sup>-1</sup> ]	1400