

QJ248MPA

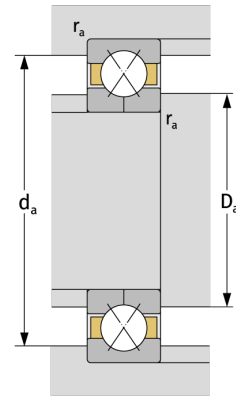
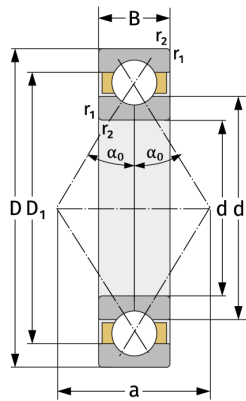
Vierpunktlager (metrisch)



Details:

Hauptabmessungen

d [mm]	240	D_1 [mm]	$\approx 364,8$
D [mm]	440	$r_{1,2}$ [mm]	4
B [mm]	72	α_0 [°]	35
Gewicht [kg]	$\approx 54,8$	a [mm]	≈ 238
d_1 [mm]	$\approx 315,3$		



Anschlussmaße		Berechnungsdaten	
$d_{a, \min}$ [mm]	257	C [kN]	655
$D_{a, \max}$ [mm]	423	C_0 [kN]	1210
$r_{a, \max}$ [mm]	3	C_u [kN]	32,4
		n_{th} [min ⁻¹]	1289
		n_g [min ⁻¹]	2400