

QJ3/500MPA

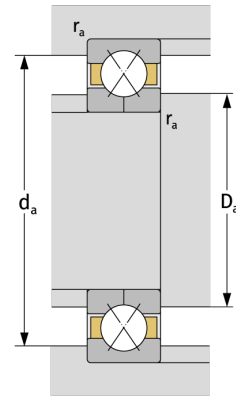
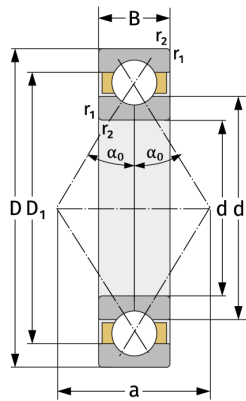
Vierpunktlager (metrisch)



Details:

Hauptabmessungen

d [mm]	500	D_1 [mm]	$\approx 830,8$
D [mm]	1030	$r_{1,2}$ [mm]	12
B [mm]	170	α_0 [°]	35
Gewicht [kg]	≈ 787	a [mm]	≈ 536
d_1 [mm]	$\approx 699,2$		



Anschlussmaße		Berechnungsdaten	
$d_{a, \min}$ [mm]	548	C [kN]	2350
$D_{a, \max}$ [mm]	982	C_0 [kN]	6850
$r_{a, \max}$ [mm]	10	C_u [kN]	125
		n_{th} [min ⁻¹]	364
		n_g [min ⁻¹]	910